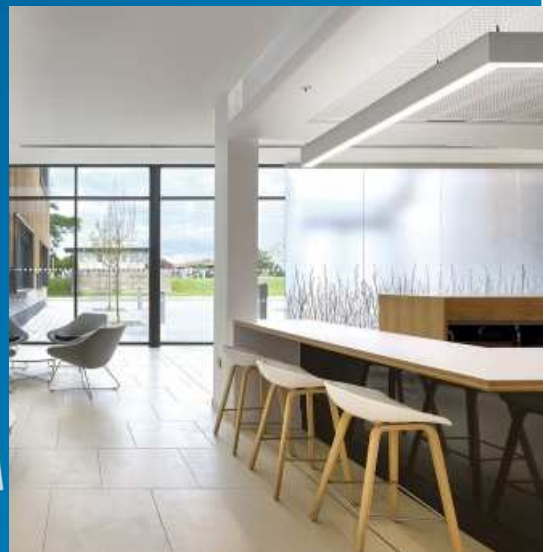
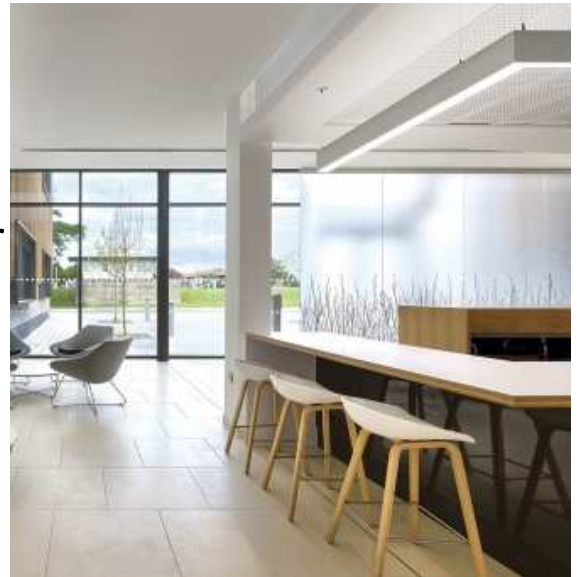


PureLine slim



PureLine - slim

An elegant and energy-efficient office lighting solution, offering flexibility for the future of workspaces



Product Features

- **Flexibility –**
 - Create standalone or continuous line
 - Two length options (4ft & 8ft) to suit varied applications
 - Available in two widths 60mm and 75mm
 - Recessed, suspended and surface mounting options
 - Available in downlight and up-light/downlight versions
 - High and low lumen versions for varied application
- **Design –**
 - Uniform and continuous lines of light
 - High efficacy
 - Elegant Design
- **Future Proof –**
 - Future Compatible with PoE technology, PureLine luminaires can also transmit the benefits of connected lighting
 - Flexible for future workspaces

Applications



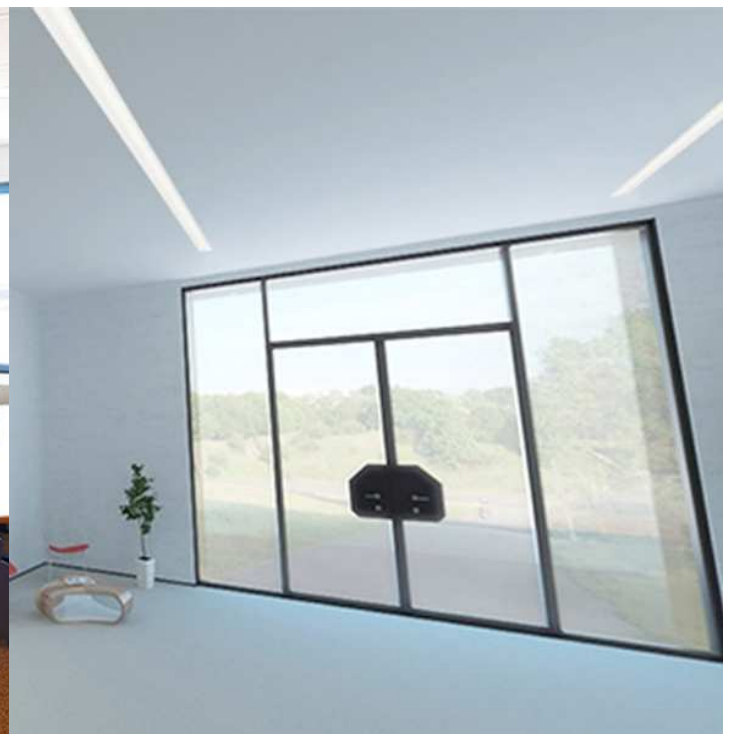
Open Plan office



Meeting Room



Cell Office



Reception

Specifications: Suspended 60mm width 4ft Length

Description	DL-LL	DL-HL	UL/DL (LL)	UL/DL (HL)	DL	UL/DL
System Lumen (lm)	2200	2600	2300 (750/ 1550)	2700 (900/ 1800)	2600	3300 (1100/ 2200)
Type	Continuous				Standalone	
Wattage (W)	19	23	19	22	23	28
Efficacy	>110 lm/W					
Dimensions	60 x 95 x 1122mm					
CCT	4000K/ 6500K					
CRI	>80					
SDCM	<5					
Operating Temp	0 – 45 ⁰ C					
IP rating	20					
Power factor	>0.9					
THD	<10%					
Voltage Range	140-270V					
Surge	2.5kV					
Life	L70B50 @ 50K Hrs.					
Driver	Fixed output / DALI					
Housing	Extruded Aluminium					
Fixture Color	Natural Silver					
Serviceability	Class B (driver replaceable)					

DL – Downlight

UL – Up-light

HL – High lumen

LL – Low lumen

Specifications: Suspended 75mm width 4ft Length

Description	DL-LL	DL-HL	UL/DL (LL)	UL/DL (HL)	DL	UL/DL
System Lumen (lm)	2300	2600	2300 (750/ 1550)	2700 (900/ 1800)	2600	3300 (1100/ 2200)
Type	Continuous				Standalone	
Wattage (W)	19	23	19	22	23	28
Efficacy	>110 lm/W					
Dimensions	75 x 95 x 1122mm					
CCT	4000K/ 6500K					
CRI	>80					
SDCM	<5					
Operating Temp	0 – 45 ⁰ C					
IP rating	20					
Power factor	>0.9					
THD	<10%					
Voltage Range	140-270V					
Surge	2.5kV					
Life	L70B50 @ 50K Hrs.					
Driver	Fixed output / DALI					
Housing	Extruded Aluminium					
Fixture Color	Natural Silver					
Serviceability	Class B (driver replaceable)					

DL – Downlight

UL – Up-light

HL – High lumen

LL – Low lumen

Specifications: Suspended 60mm width 8ft Length

Description	DL-LL	DL-HL	UL/DL (LL)	UL/DL (HL)	DL	UL/DL
System Lumen (lm)	4400	5200	4600 (1500/ 3100)	5400 (1800/ 3600)	5200	6600 (2200/ 4400)
Type	Continuous				Standalone	
Wattage (W)	38	46	38	44	46	56
Efficacy	>110 lm/W					
Dimensions	60 x 95 x 2244mm					
CCT	4000K/ 6500K					
CRI	>80					
SDCM	<5					
Operating Temp	0 – 45 ⁰ C					
IP rating	20					
Power factor	>0.9					
THD	<10%					
Voltage Range	140-270V					
Surge	2.5kV					
Life	L70B50 @ 50K Hrs.					
Driver	Fixed output / DALI					
Housing	Extruded Aluminium					
Fixture Color	Natural Silver					
Serviceability	Class B (driver replaceable)					

DL – Downlight

UL – Up-light

HL – High lumen

LL – Low lumen

Specifications: Suspended 75mm width 8ft Length

Description	DL-LL	DL-HL	UL/DL (LL)	UL/DL (HL)	DL	UL/DL
System Lumen (lm)	4400	5200	4600 (1500/ 3100)	5400 (1800/ 3600)	5200	6600 (2200/ 4400)
Type	Continuous				Standalone	
Wattage (W)	38	46	38	44	46	56
Efficacy	>110 lm/W					
Dimensions	75 x 95 x 2244mm					
CCT	4000K/ 6500K					
CRI	>80					
SDCM	<5					
Operating Temp	0 – 45 ⁰ C					
IP rating	20					
Power factor	>0.9					
THD	<10%					
Voltage Range	140-270V					
Surge	2.5kV					
Life	L70B50 @ 50K Hrs.					
Driver	Fixed output / DALI					
Housing	Extruded Aluminium					
Fixture Color	Natural Silver					
Serviceability	Class B (driver replaceable)					

DL – Downlight

UL – Up-light

HL – High lumen

LL – Low lumen

Specifications: Recessed 4ft Length

Description	60mm	75mm	60mm	75mm
System Lumen (lm)	2600	2600	2200	2200
Type	Standalone		Continuous	
Wattage (W)	23	23	19	19
Efficacy	>110 lm/W			
Dimensions (mm)	60 x 78 x 1195	75 x 78 x 1195	60 x 78 x 1195	60 x 78 x 1195
CCT	4000K/ 6500K			
CRI	>80			
SDCM	<5			
Operating Temp	0 – 45 ⁰ C			
IP rating	20			
Power factor	>0.9			
THD	<10%			
Voltage Range	140-270V			
Surge	2.5kV			
Life	L70B50 @ 50K Hrs.			
Driver	Fixed output / DALI			
Housing	Extruded Aluminium			
Fixture Color	Natural Silver			
Serviceability	Class B (driver replaceable)			

DL – Downlight

UL – Up-light

HL – High lumen

LL – Low lumen

Specifications: Recessed 8ft Length

Description	60mm	75mm	60mm	75mm
System Lumen (lm)	5200	5200	4400	4400
Type	Standalone		Continuous	
Wattage (W)	46	46	38	38
Efficacy	>110 lm/W			
Dimensions (mm)	60 x 78 x 1195	75 x 78 x 1195	60 x 78 x 1195	60 x 78 x 1195
CCT	4000K/ 6500K			
CRI	>80			
SDCM	<5			
Operating Temp	0 – 45 ⁰ C			
IP rating	20			
Power factor	>0.9			
THD	<10%			
Voltage Range	140-270V			
Surge	2.5kV			
Life	L70B50 @ 50K Hrs.			
Driver	Fixed output / DALI			
Housing	Extruded Aluminium			
Fixture Color	Natural Silver			
Serviceability	Class B (driver replaceable)			

DL – Downlight

UL – Up-light

HL – High lumen

LL – Low lumen

How to order a continuous mounting luminaire

4 FT		1 No.4 Ft Standalone Luminaire+ 2 Nos. Suspension Accessories
8 FT		1 No.8 Ft Standalone Luminaire+ 3 Nos. Suspension Accessories
12 FT		1 No.8 Ft +1 Nos 4 Ft + 2 EP + 1 Wire +4 Suspension Accessories
16 FT		2 Nos.8 Ft + 2 EP + 1 Wire + 5 Suspension Accessories
20 FT		2 No.8 Ft +1 Nos 4 Ft + 2 EP + 1 Wire +6 Suspension Accessories
24 FT		2 No.8 Ft +1 Nos 4 Ft + 2 EP + 1 Wire +6 Suspension Accessories

How to calculate the Suspension Accessories in continuous mounting

Formula

$$\left\{ 3 \times \text{No of 8 Ft. Luminaires} + 2 \times \text{No of 4 Ft. Luminaires} \right\} - \text{No of Joints}$$

How to read the Cat ref

